

# Pellet Transport System

## PTS

The OCS Pellet Transport System (PTS) is a control system that ensures the continuous and automatic transport of plastic granules (pellets) between production lines and measuring systems. The pellets from the production line are removed by

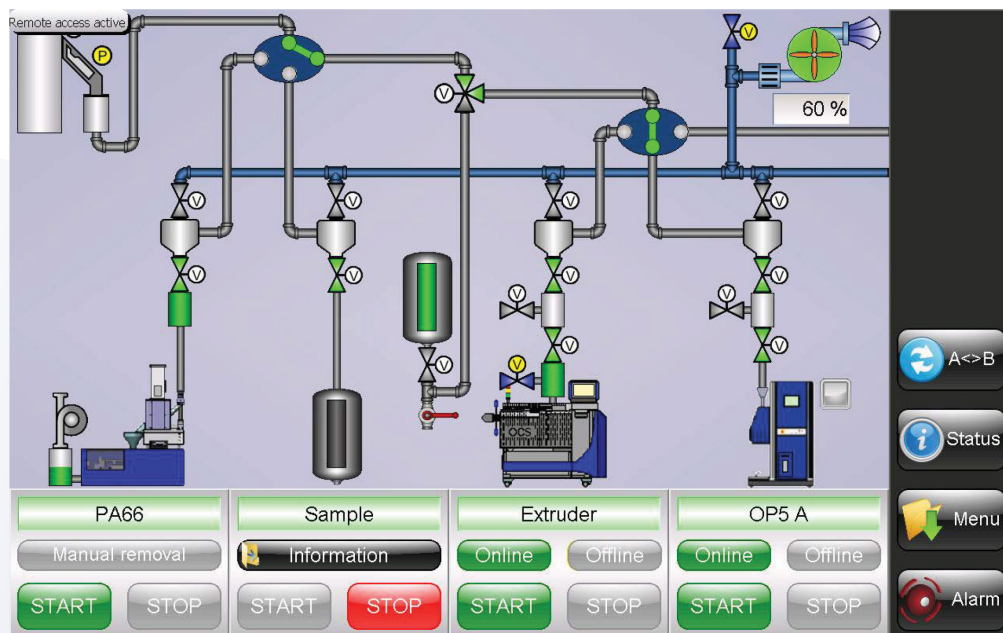
pneumatic samplers. The samples are transported through special conveyor pipes, distributed and fed to the corresponding measuring system. This ensures a gentle transport of the pellets to avoid dust and streamers.

### Features

- Individual and fully automated transport system for supplying the measuring systems
- Enables timely readjustment in case of parameter variations (minimisation of scrap)
- Simple operation via touch panel with optical and acoustic alarm functions
- Optimised transport speed for every application

### Compatible with

- All OCS Equipment



# Your success is our success.



Optical Control Systems

Wullener Feld 24, 58454 Witten, Germany  
+49 (0)2302 95622-0 (headquarters)  
+49 (0)2302 95622-222 (service hotline)  
+49 (0)2302 95622-33  
[info@ocsgmbh.com](mailto:info@ocsgmbh.com)  
[www.ocsgmbh.com](http://www.ocsgmbh.com)



19407 Oil Center Blvd, Houston, TX 77073  
+1 (281) 591-0800

[sales@southernanalytical.com](mailto:sales@southernanalytical.com)  
[service@southernanalytical.com](mailto:service@southernanalytical.com)  
[www.southernanalytical.com](http://www.southernanalytical.com)